



## CAP VOLT ELECTRICALS & AUTOMATION PVT. LTD.

*Accelerating the automation revolution*

- Hot Rolling Mill Automation
- Cold Rolling Mill Automation
- CCM Automation

- Chemical Plant Automation
- Paper Plant Automation
- Water Treatment Automation

- Packaging & Printing Automation
- Bottling Plant Automation

[www.capvolt.com](http://www.capvolt.com)

# CAP VOLT ELECTRICALS & AUTOMATION PVT. LTD.

Cap Volt Electrical & Automation commence each client relationship with an in-depth requirement analysis to gain a comprehensive evaluation of client needs. We sustain this level of involvement through the design, development and implementation stages.

We also continue to provide high level of post implementation support to clients much after a project has been completed. With this kind of dedication we are proud to see our solutions continue to give clients good returns on their investment.

## Hot Rolling

- Cascading Stand, MTC Solution
- Loop Control, BTC Solution
- First & Last Cut Solution
- Continuous Shear, Flying Shear
- Bar Handling Automation
- Re Heating Furnace Automation

## Cold Rolling

- Auto Dia Compensation
- Tension Control
- Main Line Automation
- Pickling Line Automation
- Slitting Line Automation

## Chemical

- PID Process Control
- Analog calibration
- Recipe
- Report Generation
- Data, Alarm Log

## CCM

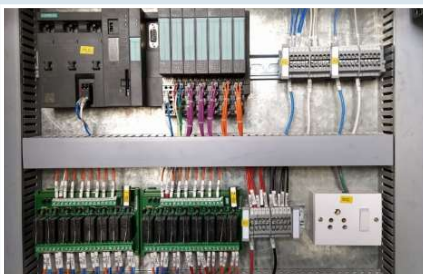
- Primary Automation
- Secondary Automation
- Auto Length Calculation
- Billet Shear Automation

## Paper Mill

- Dryer Automation
- Winder control
- Tension Control
- Size Press Automation
- Duplex Cutter

## Printing

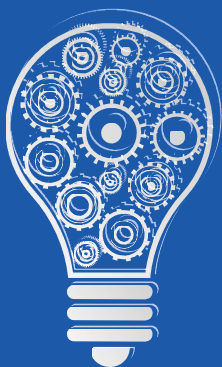
- Winder Unwinder
- Tension Control
- Dancer Control
- Cutter Application
- Dia calculation





- MCC Panel
- PCC Panel
- DC Stack/Drive Panel
- AC Drive Panel
- PLC Panel
- Electronics Lock System
- Switch Gears
- PLC
- HMI
- Scada
- AC Drive
- DC Drive
- Servo Drive

## AUTOMATION FOR YOUR BUSINESS



Our highly Professional and Skilled team of enthusiastic, dedicated Engineers serves as the backbone for our automation and provides complete developmental cycle of industrial automation i.e. Designing, Installing, Testing, Commissioning & software development with innovative and economical solutions to meet turnkey project requirements.



SOLUTION PARTNER


**SIEMENS** **ABB** **Parker** **Lenze**


**Danfoss** **Godrej** **BAUMÜLLER** **DELTA**

**Schneider Electric** **YASKAWA**



**CAP VOLT ELECTRICALS & AUTOMATION PVT. LTD.**

 +91-8882779558, 9953259330

 electricalcapvolt@gmail.com  
electricalcapvolt@capvolt.com

 www.capvolt.com

CIN NO-U74999HR2019PTC077986